



---

2640 Fountain View Drive, Houston, Texas 77057 | 713.260.0600 | Mark Thiele, **Interim President & CEO**  
**Houston Housing Authority Board of Commissioners:** LaRence Snowden, *Chair* | Kristy M. Kirkendoll, *Vice Chair*  
Dr. Max Miller, Jr. | Stephanie Ballard | Andrea Hillard Cooksey | Kris Thomas | Guillermo "Will" Hernandez

---

The Houston Housing Authority (HHA), has issued this Amendment No. 1 to IFB 21-40 The Rehabilitation of Units at Oxford Place Apartments for the purposes of incorporating Exhibit D Drawings into this solicitation.

**All other terms and conditions shall remain the same.**

\_\_\_\_\_  
**Date**

*Austin Crotts*  
\_\_\_\_\_  
**Austin Y. Crotts, MA**  
**Procurement Specialist,**  
**Houston Housing Authority**



*A Fair Housing and Equal Employment Opportunity Agency. For assistance: Individuals with disabilities may contact the 504/ADA Administrator at 713-260-0353, TTY 713-260-0574 or [504ADA@housingforhouston.com](mailto:504ADA@housingforhouston.com)*

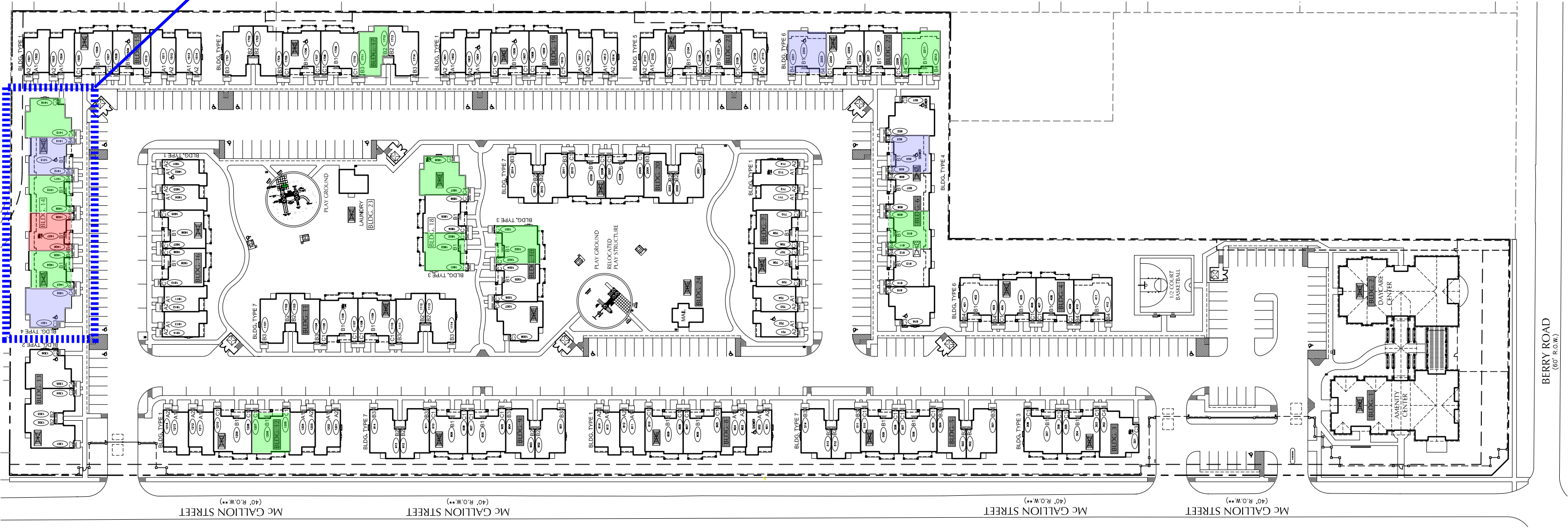
Exhibit D IFB 21-40

BUILDING 14

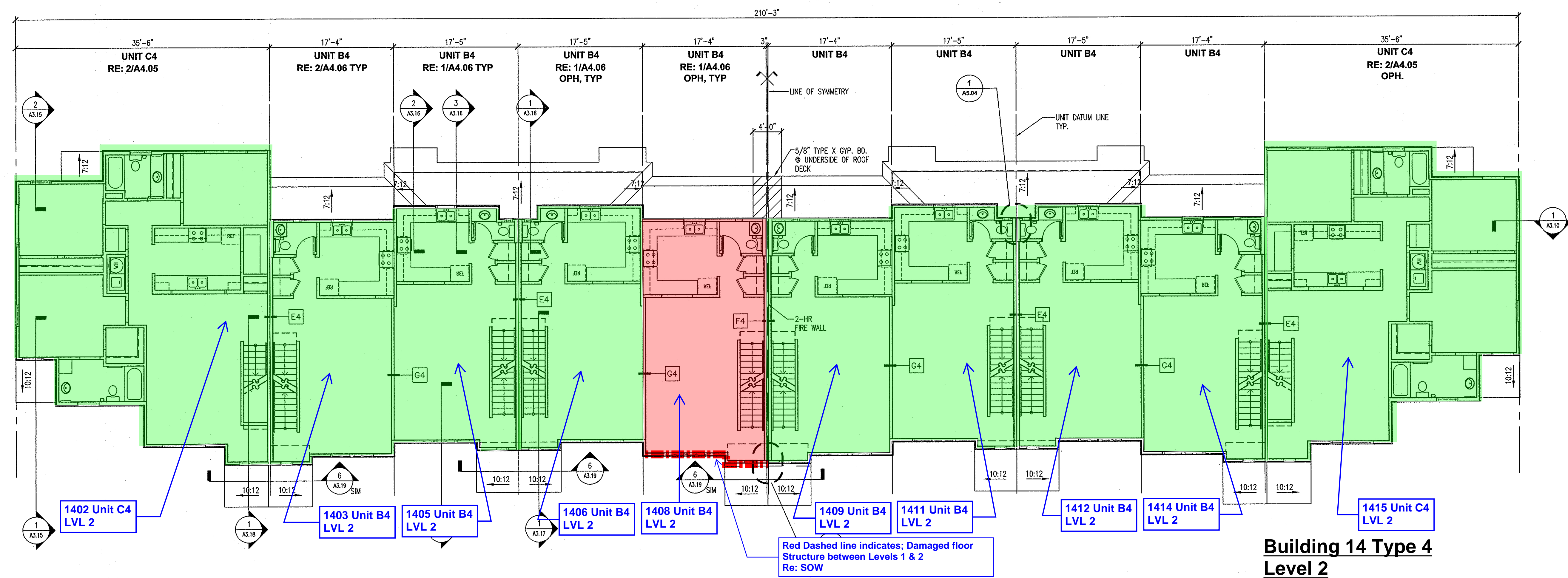
SITE PLAN

LEGEND

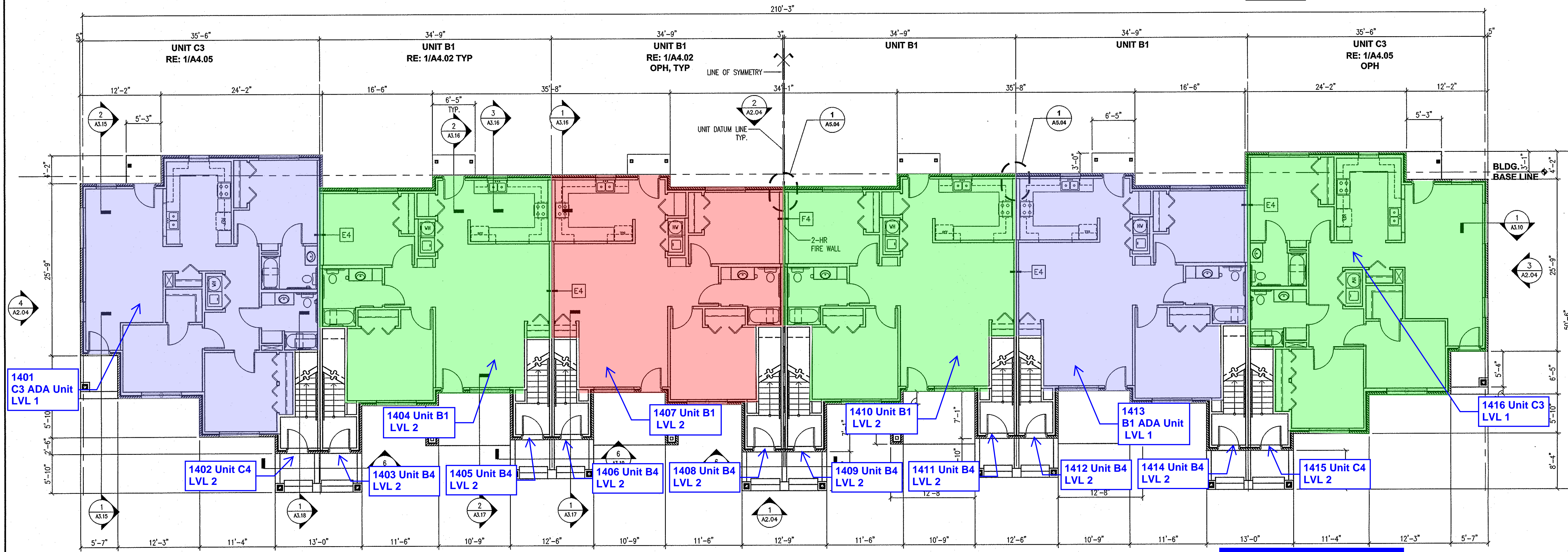
- General Repair at Units
- General Repair at ADA Units
- Structural Repair at Units







**Building 14 Type 4  
Level 2**



**LEGEND**

**Building 14 Type 4  
Level 1**

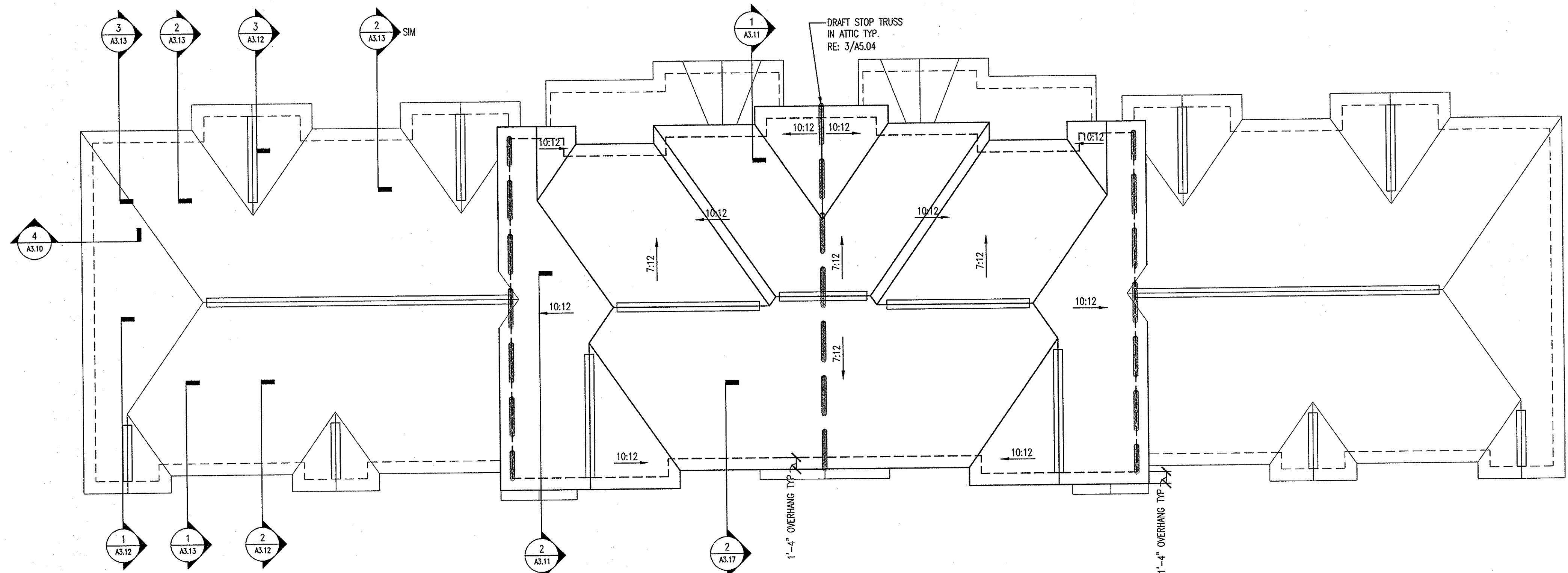
- LEGEND**
- General Repair at Units
  - General Repair at ADA Units
  - Structural Repair at Units



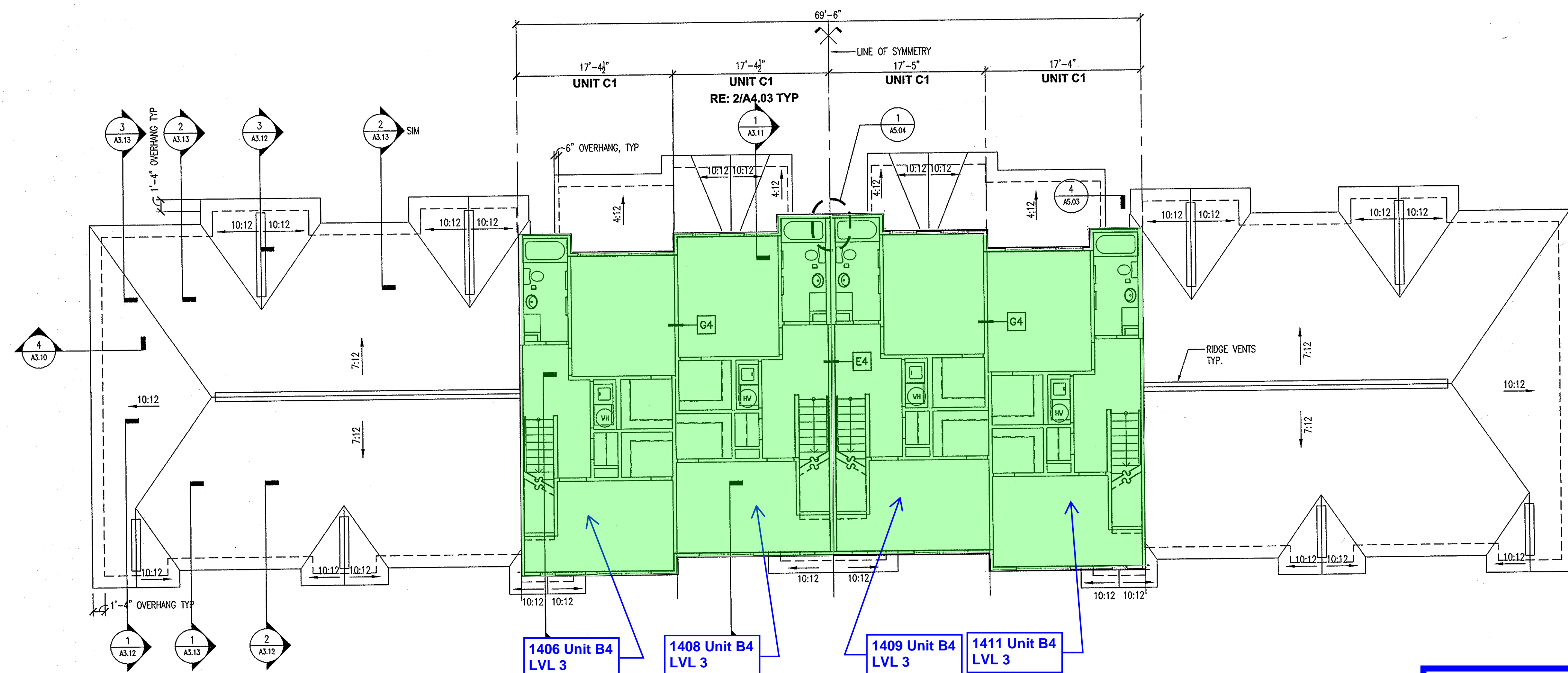
GENERAL NOTES - BLDGS

DIMENSIONS INDICATED ARE TO EXTERIOR FACE OF BRICK/EDGE OF FOUNDATION OR TO UNIT DATUM LINE (1/2" FROM FACE OF STUD).

ALL BUILDINGS TO HAVE FIRE SPRINKLERS (NFPA 13R) TO BE DESIGNED AND INSTALLED BY A LICENSED SPRINKLER CONTRACTOR.  
ALL UNITS ARE SEPARATED BY MIN. 30 MIN. RATED FIRE PARTITIONS OR HORIZ. FLOOR/CEILING ASSEMBLIES.



2 ROOF PLAN  
1/8"=1'-0"



LEGEND

General Repair at Units

Building 14 Type 4  
Level 3

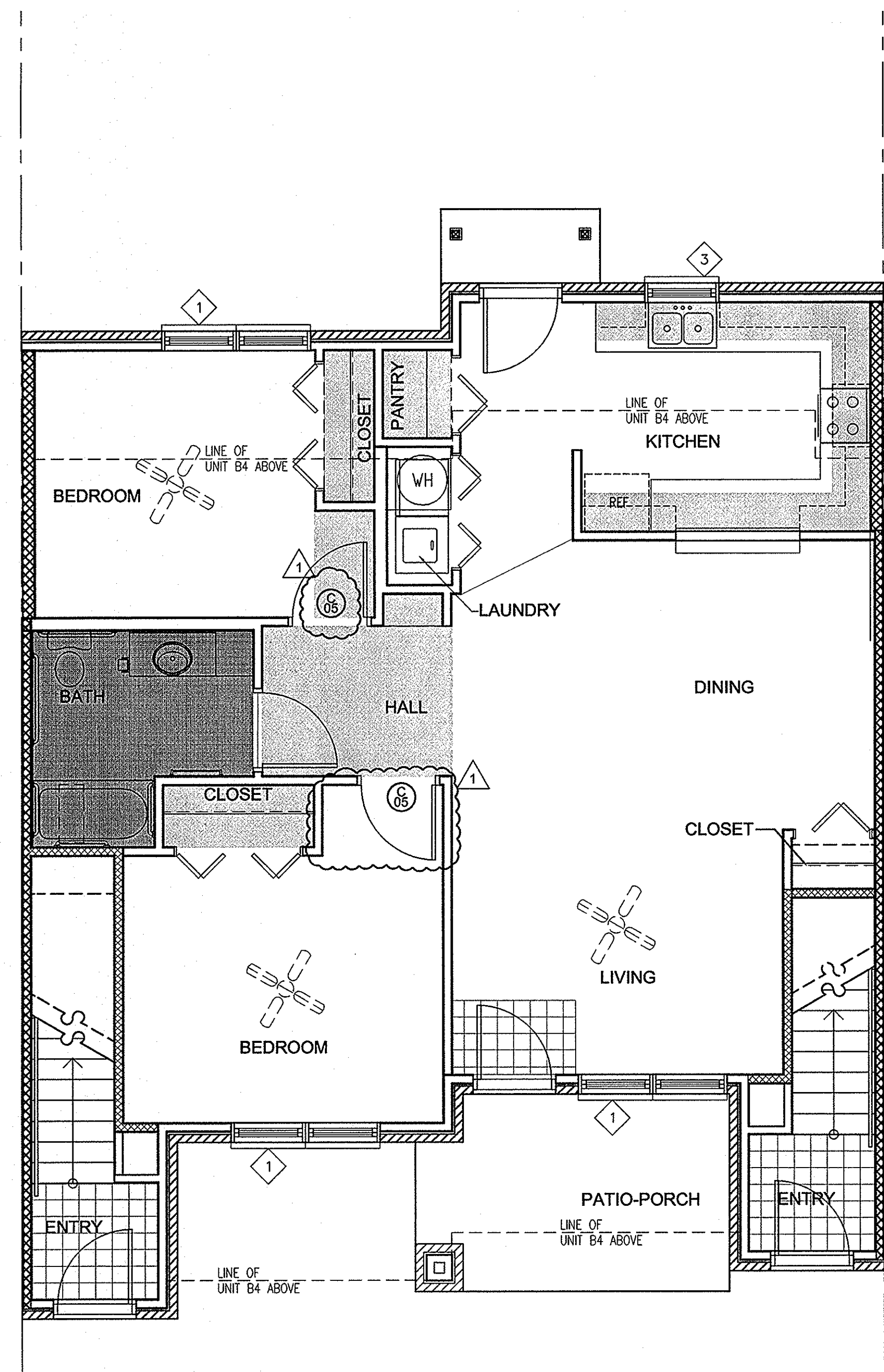
LEGEND

- General Repair at Units
- General Repair at ADA Units
- Structural Repair at Units

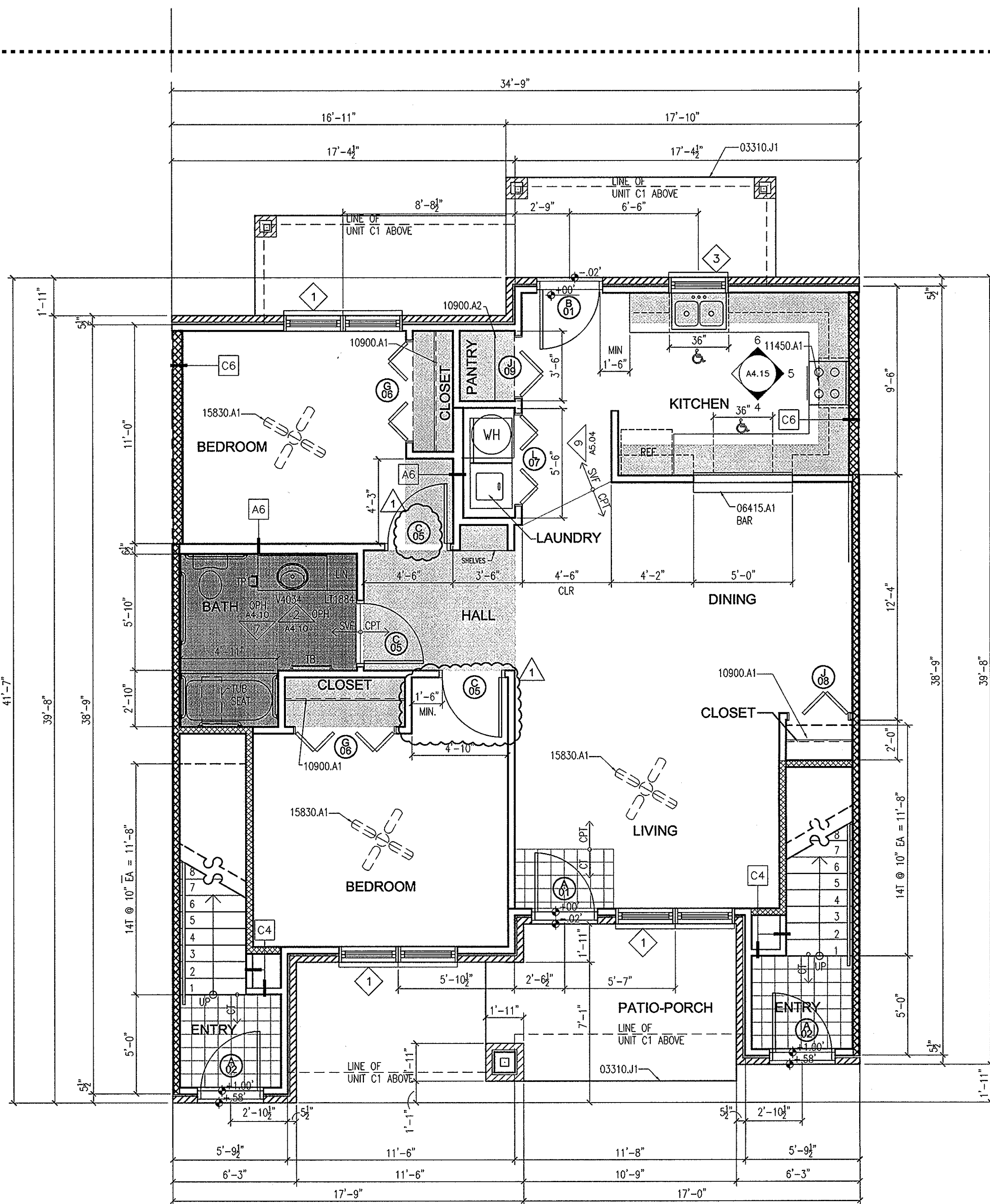


THIS SHEET FOR GENERAL  
REFERENCE ONLY

CONTRACTOR TO VERIFY  
EXISTING CONDITIONS IN FIELD



2 UNIT B1 LEVEL 1 (W/ UNIT B4 ABOVE)  
1/4"=1'-0"



Unit B1  
Level 1

GENERAL NOTES - UNITS

8'-0" AFF FURR-DOWN-TYP, 7'-0" AFF FURR-DOWN  
ABOVE KITCHEN CABINETS AND AT THIRD FLOOR  
FURR-DOWNS

7'-6" AFF FURR-DOWN

45 MINUTE RATED PARTITION (30 MIN. REQ'D)

DIMENSIONS ARE TO FACE OF BRICK; EXTERIOR FACE  
OF EXTERIOR STUDS; FINISH FACE OF CYP. BD. AT  
INTERIOR WALLS (EXCLUDES CERAMIC WALL TILE WHERE  
PRESENT); UNIT DATUM LINES (1/2" FROM OUTSIDE  
FACE OF STUD @ DEMISING WALL BETWEEN UNITS).

ALL INSIDE PARTITIONS ARE TYPE "A4" (3 1/2" STUDS)  
UNLESS OTHERWISE NOTED. REFER TO SHEET A6.04  
FOR PARTITION CONSTRUCTION DETAILS.

ACCESSIBILITY NOTES

DESIGNATES COUNTER WITH ACCESSIBLE KNEE SPACE  
(LOCATED AT ACCESSIBLE UNITS ONLY)

ALL FIRST FLOOR UNITS ARE ACCESSIBLE IN ACCORDANCE  
WITH USAF OR ADAPTABLE IN ACCORDANCE WITH THE  
FAIR HOUSING ACT.

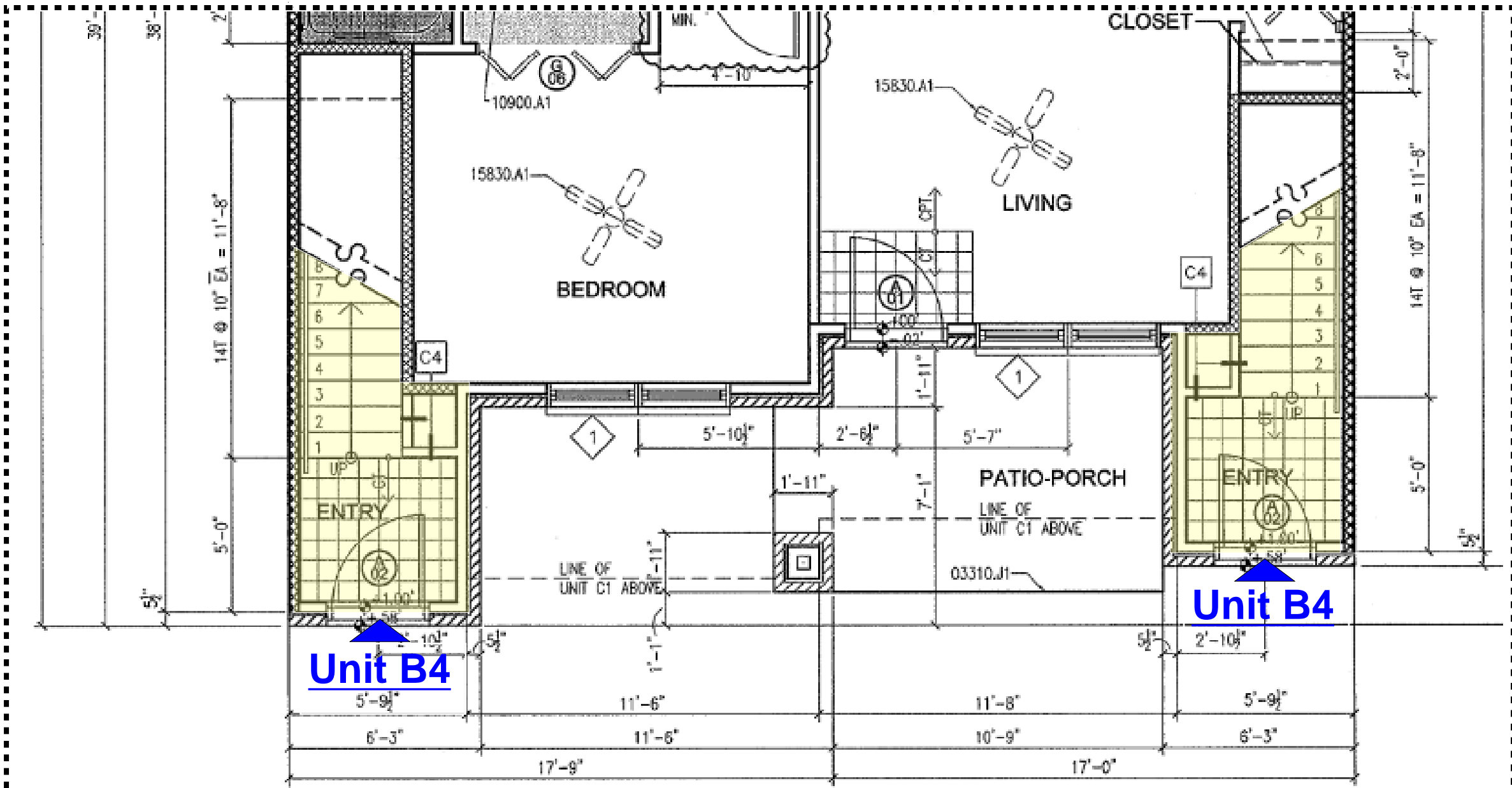
BLOCKING, PER DETAIL 8/A5.04, SHALL BE INSTALLED AT  
ALL GROUND FLOOR DWELLING UNITS WHERE PROPOSED  
OR FUTURE GRAB BARS, HANDRAILS OR OTHER WALL  
MOUNTED ITEMS ARE SCHEDULED.

INSULATE ALL DRAIN AND HOT WATER SUPPLIES IN  
ACCESSIBLE UNITS NOT ENCLOSED IN CABINETS.

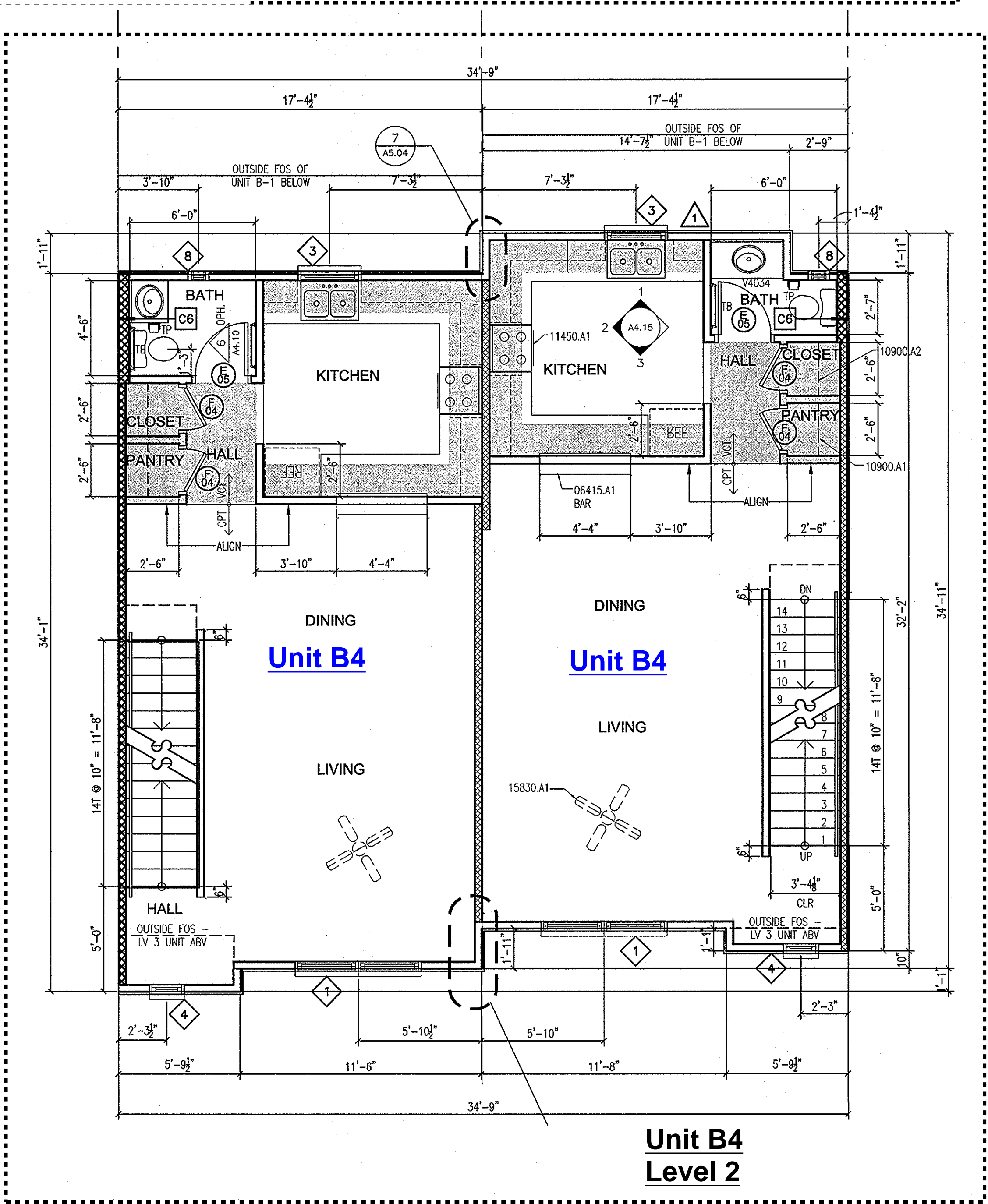
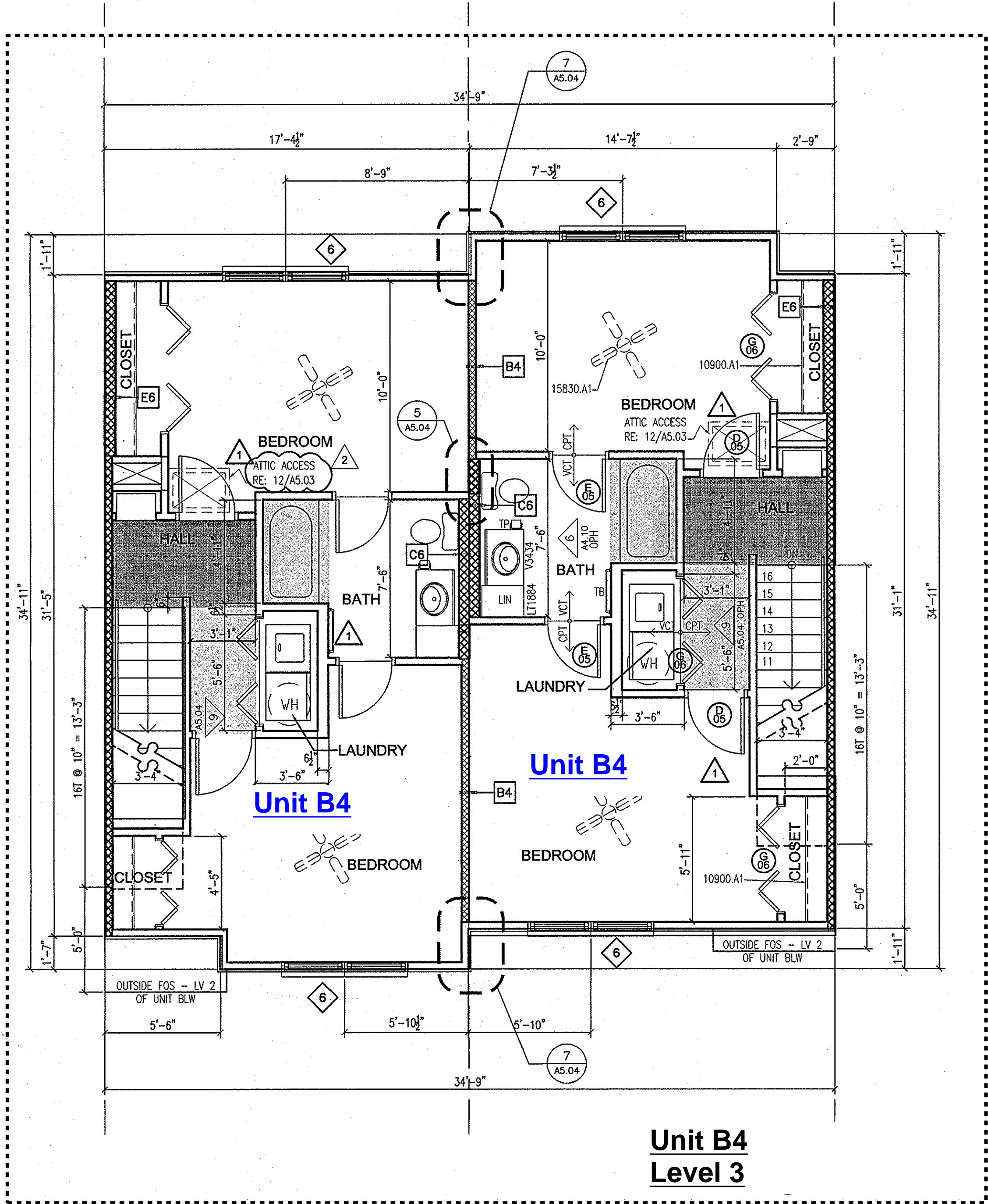


THIS SHEET FOR GENERAL  
REFERENCE ONLY

CONTRACTOR TO VERIFY  
EXISTING CONDITIONS IN FIELD



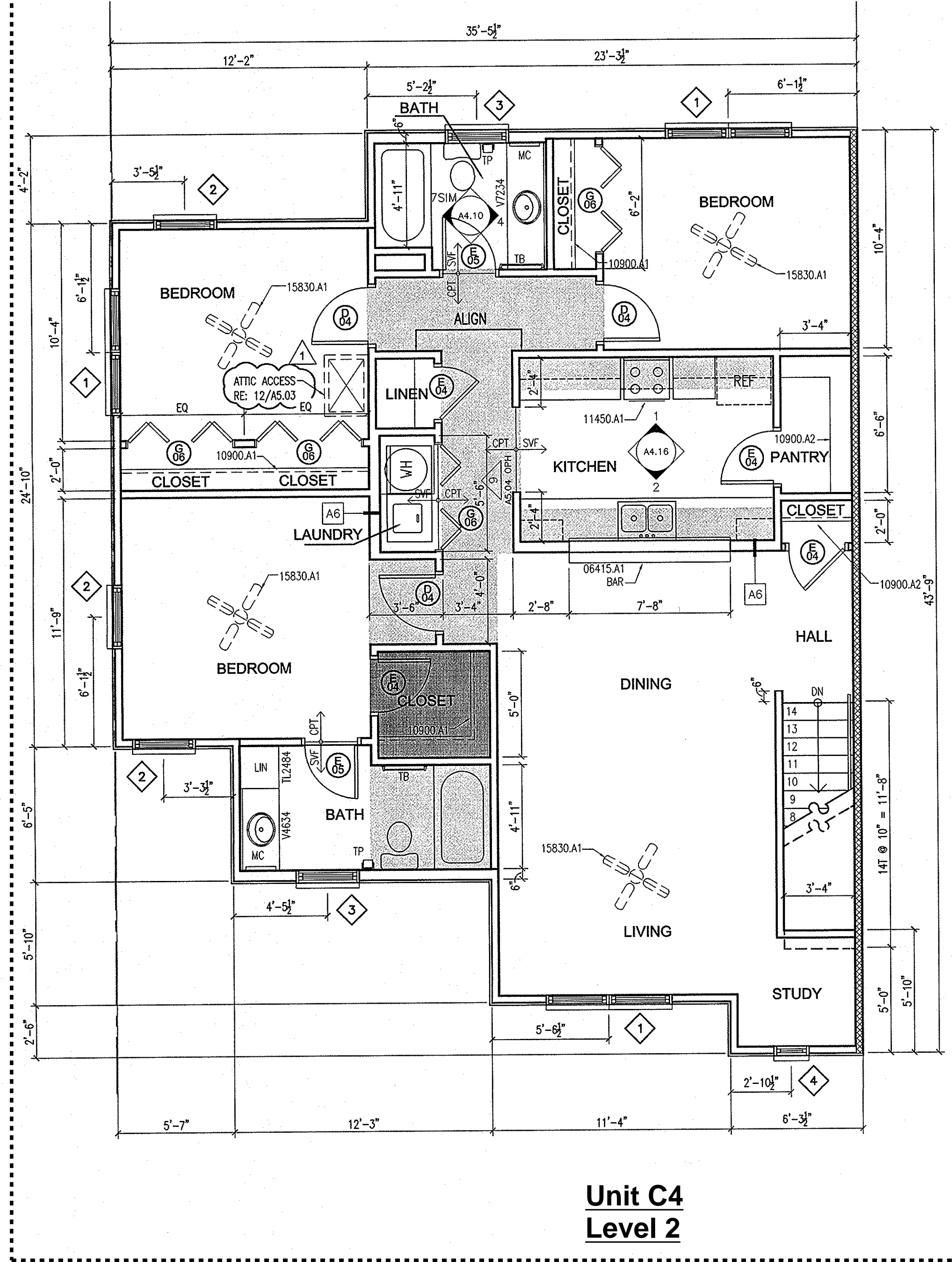
- GENERAL NOTES - UNITS**
- 8'-0" AFF FURR-DOWN-TYP, 7'-0" AFF FURR-DOWN ABOVE KITCHEN CABINETS AND AT THIRD FLOOR FURR-DOWNS
- 7'-6" AFF FURR-DOWN
- 45 MINUTE RATED PARTITION (30 MIN. REQ'D)
- DIMENSIONS ARE TO FACE OF BRICK; EXTERIOR FACE OF EXTERIOR STUDS; FINISH FACE OF CYP. BD. AT INTERIOR WALLS (EXCLUDES CERAMIC WALL TILE WHERE PRESENT); UNIT DATUM LINES (1/2" FROM OUTSIDE FACE OF STUD @ DEMISING WALL BETWEEN UNITS).
- ALL INSIDE PARTITIONS ARE TYPE "A4" (3 1/2" STUDS) UNLESS OTHERWISE NOTED. REFER TO SHEET A6.04 FOR PARTITION CONSTRUCTION DETAILS.
- ACCESSIBILITY NOTES**
- DESIGNATES COUNTER WITH ACCESSIBLE KNEE SPACE (LOCATED AT ACCESSIBLE UNITS ONLY)
- ALL FIRST FLOOR UNITS ARE ACCESSIBLE IN ACCORDANCE WITH USAF OR ADAPTABLE IN ACCORDANCE WITH THE FAIR HOUSING ACT.
- BLOCKING, PER DETAIL 8/A5.04, SHALL BE INSTALLED AT ALL GROUND FLOOR DWELLING UNITS WHERE PROPOSED OR FUTURE GRAB BARS, HANDRAILS OR OTHER WALL MOUNTED ITEMS ARE SCHEDULED.
- INSULATE ALL DRAIN AND HOT WATER SUPPLIES IN ACCESSIBLE UNITS NOT ENCLOSED IN CABINETS.



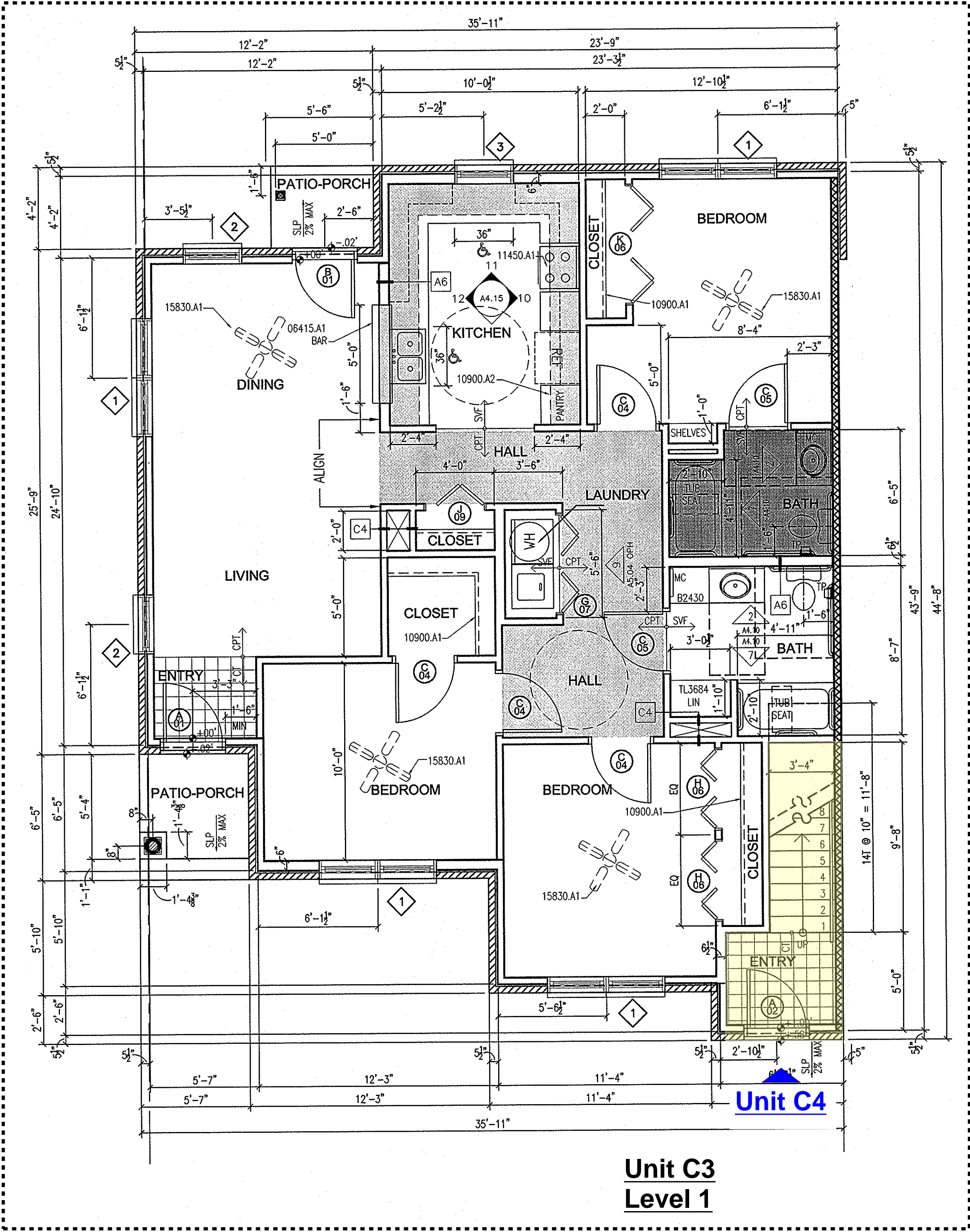


THIS SHEET FOR GENERAL  
REFERENCE ONLY

CONTRACTOR TO VERIFY  
EXISTING CONDITIONS IN FIELD



2 UNIT C4 LEVEL 2  
1/4"=1'-0"



1 UNIT C3 LEVEL 1  
1/4"=1'-0"

GENERAL NOTES - UNITS

8'-0" AFF FURR-DOWN-TYP, 7'-0" AFF FURR-DOWN  
ABOVE KITCHEN CABINETS AND AT THIRD FLOOR  
FURR-DOWNS

7'-6" AFF FURR-DOWN

45 MINUTE RATED PARTITION (30 MIN. REQ'D)

DIMENSIONS ARE TO FACE OF BRICK; EXTERIOR FACE  
OF EXTERIOR STUDS; FINISH FACE OF GYP. BD. AT  
INTERIOR WALLS (EXCLUDES CERAMIC WALL TILE WHERE  
PRESENT); UNIT DATUM LINES (1/2" FROM OUTSIDE  
FACE OF STUD @ DEMISING WALL BETWEEN UNITS).

ALL INSIDE PARTITIONS ARE TYPE "A4" (3 1/2" STUDS)  
UNLESS OTHERWISE NOTED. REFER TO SHEET A6.04  
FOR PARTITION CONSTRUCTION DETAILS.

ACCESSIBILITY NOTES

DESIGNATES COUNTER WITH ACCESSIBLE KNEE SPACE  
(LOCATED AT ACCESSIBLE UNITS ONLY)

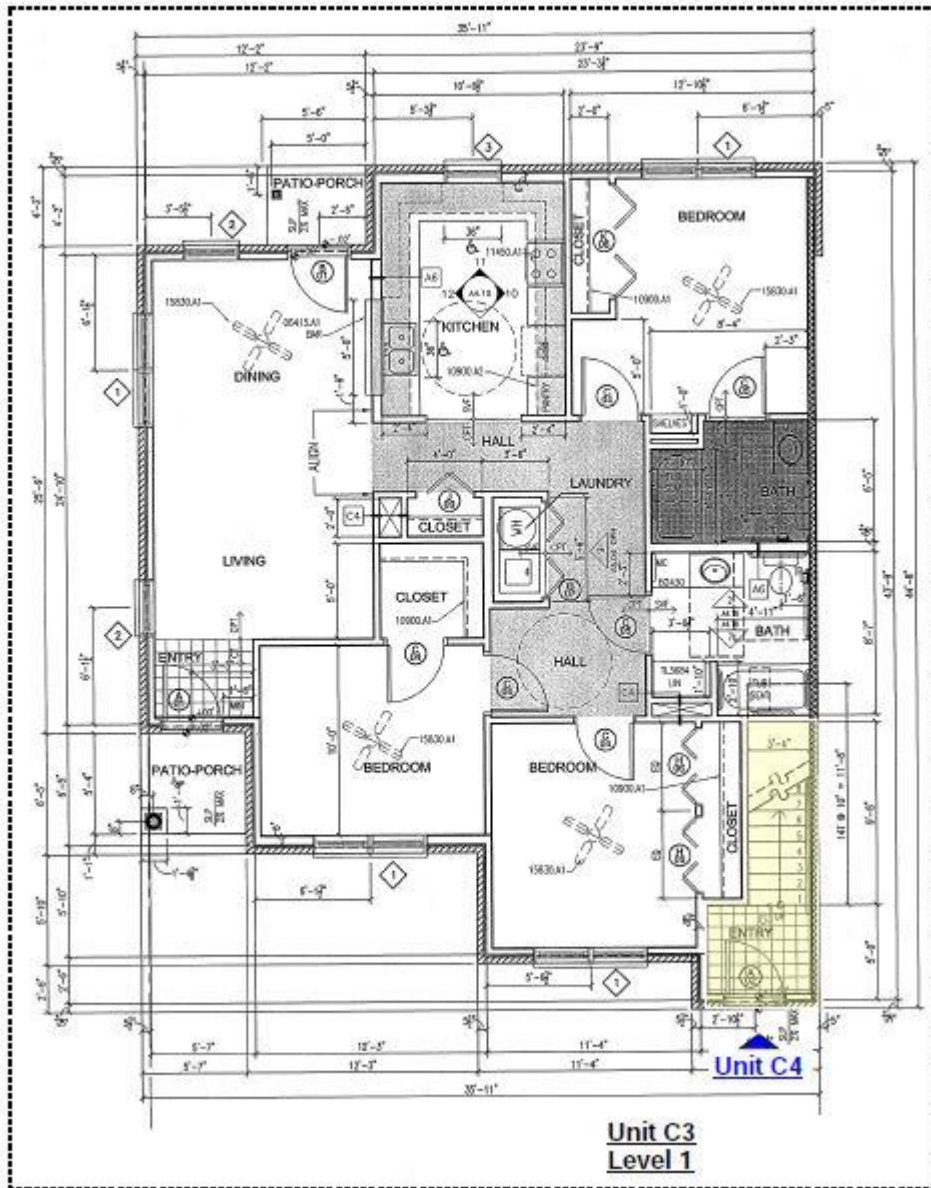
ALL FIRST FLOOR UNITS ARE ACCESSIBLE IN ACCORDANCE  
WITH USAF OR ADAPTABLE IN ACCORDANCE WITH THE  
FAIR HOUSING ACT.

BLOCKING, PER DETAIL 8/A5.04, SHALL BE INSTALLED AT  
ALL GROUND FLOOR DWELLING UNITS WHERE PROPOSED  
OR FUTURE GRAB BARS, HANDRAILS OR OTHER WALL  
MOUNTED ITEMS ARE SCHEDULED.

INSULATE ALL DRAIN AND HOT WATER SUPPLIES IN  
ACCESSIBLE UNITS NOT ENCLOSED IN CABINETS.



## WORK ASSOCIATED WITH UNIT 1401 (C3 ADA Unit Bldg Type 4)



### GENERAL NOTES - UNITS

8'-0" AFF FURR-DOWN-TYP, 7'-0" AFF FURR-DOWN ABOVE KITCHEN CABINETS AND AT THIRD FLOOR FURR-DOWNS

7'-6" AFF FURR-DOWN

45 MINUTE RATED PARTITION (30 MIN. REQ'D)

DIMENSIONS ARE TO FACE OF BRICK; EXTERIOR FACE OF EXTERIOR STUDS; FINISH FACE OF GYP. BD. AT INTERIOR WALLS (EXCLUDES CERAMIC WALL TILE WHERE PRESENT); UNIT DATUM LINES (1/2" FROM OUTSIDE FACE OF STUD @ DEMISING WALL BETWEEN UNITS).

ALL INSIDE PARTITIONS ARE TYPE "A4" (3 1/2" STUDS) UNLESS OTHERWISE NOTED. REFER TO SHEET A6.04 FOR PARTITION CONSTRUCTION DETAILS.

### ACCESSIBILITY NOTES

& DESIGNATES COUNTER WITH ACCESSIBLE KNEE SPACE (LOCATED AT ACCESSIBLE UNITS ONLY)

ALL FIRST FLOOR UNITS ARE ACCESSIBLE IN ACCORDANCE WITH USAF OR ADAPTABLE IN ACCORDANCE WITH THE FAIR HOUSING ACT.

BLOCKING, PER DETAIL 8/A5.04, SHALL BE INSTALLED AT ALL GROUND FLOOR DWELLING UNITS WHERE PROPOSED OR FUTURE GRAB BARS, HANDRAILS OR OTHER WALL MOUNTED ITEMS ARE SCHEDULED.

INSULATE ALL DRAIN AND HOT WATER SUPPLIES IN ACCESSIBLE UNITS NOT ENCLOSED IN CABINETS.

**THIS SHEET FOR GENERAL REFERENCE ONLY**

**CONTRACTOR TO VERIFY EXISTING CONDITIONS IN FIELD**